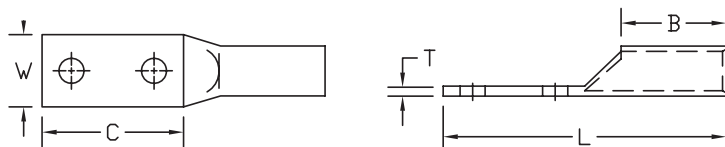


# COPPER COMPRESSION LUGS

## Long Barrel - Two Hole Tongue with Inspection Window

### Type BBLZ-D

- Manufactured from high conductivity seamless copper tubing
- Tin-plated to inhibit corrosion
- Beveled entry for easy cable insertion
- Inspection window to ensure full cable insertion
- Two hole mounting pad assures maximum secureness
- Long barrel provides high pull out force and added secureness for improved mechanical and electrical properties
- Color coded barrels are marked with die index numbers
- Connectors are suitable for voltages up to 35 KV
- 45° and 90° angles are UL listed and CSA certified
- Connectors are UL listed and CSA certified with Penn-Union, Burndy, T&B, Huskie, Greenlee and Versa-Crimp® style tooling



BBLZ-D

### BBLZ-D DIMENSIONS & INSTALLATION TOOLING INFORMATION

CATALOG NUMBER	COPPER CONDUCTOR SIZE	STUD HOLE SIZE	FIGURE DIMENSIONS (IN.)						INSTALLATION TOOLING				
			STUD HOLE SPACING	TONGUE WIDTH "W"	TONGUE LENGTH "C"	TONGUE THICKNESS "T"	BARREL LENGTH "B"	OVERALL LENGTH "L"	COLOR CODE	PENN-UNION DIELESS MECHANICAL TOOLS	BURNDY DIE INDEX NO.	PENN-UNION DIE CATALOG NO.	WIRE STRIP LENGTH
BBLZ-8D-2TC14	8 AWG	1/4"	.63	.41	1.22	.08	.94	2.44	Red	TDM-250 or TDM-500	6	T-49	1-1/16"
BBLZ-8D-2TC14E2		1/4"	.75	.41	1.36	.08	.94	2.58					
BBLZ-8D-2TC38E3		3/8"	.81	.56	1.83	.06	.94	3.05					
BBLZ-8D-2TC38		3/8"	1.00	.60	1.75	.06	.75	2.63					
BBLZ-6D-2TC14	6 AWG	1/4"	.63	.41	1.22	.09	1.13	2.60	Blue	TDM-250 or TDM-500	7	T-7	1-1/4"
BBLZ-6D-2TC14E2		1/4"	.75	.41	1.36	.09	1.13	2.74					
BBLZ-6D-2TC38E2		3/8"	.75	.61	1.58	.06	1.13	2.96					
BBLZ-6D-2TC38E3		3/8"	.81	.61	1.83	.06	1.13	3.21					
BBLZ-6D-2TC38		3/8"	1.00	.60	1.74	.06	1.00	2.87					
BBLZ-6DN		1/2"	1.75	.70	2.77	.09	1.00	3.92					
BBLZ-5D-2TC14	5 AWG	1/4"	.63	.44	1.22	.08	1.13	2.60	Blue	TDM-250 or TDM-500	7	T-7	1-1/4"
BBLZ-5D-2TC14E2		1/4"	.75	.44	1.36	.08	1.13	2.74					
BBLZ-5D-2TC38E2		3/8"	.75	.61	1.58	.07	1.13	2.96					
BBLZ-5D-2TC38E3		3/8"	.81	.61	1.83	.07	1.13	3.21					
BBLZ-5D-2TC38		3/8"	1.00	.61	1.83	.07	1.13	3.21					
BBLZ-4D-2TC14	4 AWG	1/4"	.63	.50	1.22	.09	1.13	2.60	Gray	TDM-250 or TDM-500	8	T-8	1-1/4"
BBLZ-4D-2TC14E2		1/4"	.75	.50	1.36	.09	1.13	2.74					
BBLZ-4D-2TC38E2		3/8"	.75	.61	1.56	.08	1.13	2.96					
BBLZ-4D-2TC38E3		3/8"	.81	.61	1.83	.08	1.13	3.21					
BBLZ-4D-2TC38		3/8"	1.00	.61	1.81	.08	1.13	3.21					
BBLZ-4D1		1/2"	1.75	.94	3.00	.08	1.13	4.38					
BBLZ-3D-2TC14	3 AWG	1/4"	.63	.65	1.22	.20	1.13	2.60	White	TDM-250 or TDM-500	9	T-9	1-1/4"
BBLZ-3D-2TC14E2		1/4"	.75	.65	1.36	.20	1.13	2.74					
BBLZ-3D-2TC38E2		3/8"	.75	.65	1.58	.20	1.13	2.96					
BBLZ-3D-2TC38E3		3/8"	.81	.65	1.83	.20	1.13	3.21					
BBLZ-3D-2TC38		3/8"	1.00	.65	1.83	.20	1.13	3.21					

**BBLZ-D DIMENSIONS & INSTALLATION TOOLING INFORMATION** (continued)

CATALOG NUMBER	COPPER CONDUCTOR SIZE	STUD HOLE SIZE	FIGURE DIMENSIONS (IN.)						INSTALLATION TOOLING				WIRE STRIP LENGTH
			STUD HOLE SPACING	TONGUE WIDTH "W"	TONGUE LENGTH "L"	TONGUE THICKNESS "T"	BARREL LENGTH "B"	OVERALL LENGTH "L"	COLOR CODE	PENN-UNION DIELESS MECHANICAL TOOLS	BURNDY DIE INDEX NO.	PENN-UNION DIE CATALOG NO.	
BBLZ-2D-2TC14	2 AWG	1/4"	.63	.59	1.22	.11	1.25	2.75	Brown	TDM-250 or TDM-500	10	T-10	1-3/8"
BBLZ-2D-2TC14E2		1/4"	.75	.59	1.36	.11	1.25	2.89					
BBLZ-2D-2TC38E2		3/8"	.75	.59	1.58	.11	1.25	3.11					
BBLZ-2D-2TC38E3		3/8"	.81	.59	1.83	.11	1.25	3.36					
BBLZ-2D-2TC38		3/8"	1.00	.59	1.83	.11	1.25	3.36					
BBLZ-2D-2NTC38		3/8"	1.75	.59	2.58	.11	1.25	4.11					
BBLZ-2D6	1 AWG	1/2"	1.75	.81	3.00	.09	1.25	4.53	Green	TDM-250 or TDM-500	11	T-11	1-1/2"
BBLZ-1D-2TC14		1/4"	.63	.67	1.22	.10	1.38	2.94					
BBLZ-1D-2TC14E2		1/4"	.75	.67	1.36	.10	1.38	3.08					
BBLZ-1D-2TC38E2		3/8"	.75	.67	1.58	.10	1.38	3.30					
BBLZ-1D-2TC38E3		3/8"	.81	.67	1.83	.10	1.38	3.55					
BBLZ-1D-2TC38		3/8"	1.00	.67	1.83	.10	1.38	3.55					
BBLZ-1D2	1/2"	1.75	.70	2.77	.09	1.20	4.12	Pink	TDM-250 or TDM-500	12	T-12	1-1/2"	
BBLZ-1/0D-2TC14	1/4"	.63	.74	1.22	.11	1.38	2.94						
BBLZ-1/0D-2TC14E2	1/4"	.75	.74	1.36	.11	1.38	3.08						
BBLZ-1/0D-2TC38E2	3/8"	.75	.74	1.58	.11	1.38	3.30						
BBLZ-1/0D-2TC38E3	3/8"	.81	.74	1.83	.11	1.38	3.55						
BBLZ-1/0D-2TC38	3/8"	1.00	.74	1.83	.11	1.38	3.55						
BBLZ-1/0D-2NTC38	3/8"	1.75	.74	2.58	.11	1.38	4.30	Black	TDM-250 or TDM-500	13	T-13	1-5/8"	
BBLZ-1/0D3	1/2"	1.75	.81	3.00	.10	1.38	4.63						
BBLZ-2/0D-2TC14	1/4"	.63	.82	1.22	.12	1.50	3.06						
BBLZ-2/0D-2TC14E2	1/4"	.75	.82	1.36	.12	1.50	3.20						
BBLZ-2/0D-2TC38E2	3/8"	.75	.82	1.58	.12	1.50	3.42						
BBLZ-2/0D-2TC38E3	3/8"	.81	.82	1.83	.12	1.50	3.67						
BBLZ-2/0D-2TC38	3/8"	1.00	.82	1.83	.12	1.50	3.67	Orange	TDM-250 or TDM-500	14	T-14	1-5/8"	
BBLZ-2/0D	1/2"	1.75	.82	3.00	.12	1.50	4.84						
BBLZ-3/0D-2TC14	1/4"	.63	.89	1.22	.13	1.50	3.13						
BBLZ-3/0D-2TC14E2	1/4"	.75	.89	1.36	.13	1.50	3.27						
BBLZ-3/0D-2TC38E2	3/8"	.75	.89	1.58	.13	1.50	3.49						
BBLZ-3/0D-2TC38E3	3/8"	.81	.89	1.83	.13	1.50	3.74						
BBLZ-3/0D-2TC38	3/8"	1.00	.89	1.83	.13	1.50	3.74	Purple	TDM-250 or TDM-500	15	T-15	1-3/4"	
BBLZ-3/0D	1/2"	1.75	.89	3.00	.13	1.50	4.91						
BBLZ-4/0D-2TC14	1/4"	.63	1.00	1.22	.14	1.63	3.32						
BBLZ-4/0D-2TC14E2	1/4"	.75	1.00	1.36	.14	1.63	3.46						
BBLZ-4/0D-2TC716E2	7/16"	.75	1.00	1.83	.14	1.63	3.93						
BBLZ-4/0D-2TC38E2	3/8"	.75	1.00	1.58	.14	1.63	3.68						
BBLZ-4/0D-2TC38E3	3/8"	.81	1.00	1.83	.14	1.63	3.93	Yellow	TDM-250 or TDM-500	16	T-16	1-3/4"	
BBLZ-4/0D-2TC38	3/8"	1.00	1.00	1.83	.14	1.63	3.93						
BBLZ-4/0D-2NTC38	3/8"	1.75	1.00	2.58	.14	1.63	4.68						
BBLZ-4/0D	1/2"	1.75	1.00	3.00	.14	1.63	5.10						
BBLZ-025D-2TC14E2	250 kcmil	1/4"	.75	1.09	1.36	.16	1.63						3.58
BBLZ-025D-2TC38E3		3/8"	.81	1.09	1.83	.16	1.63						4.05
BBLZ-025D		1/2"	1.75	1.09	3.00	.16	1.63	5.13					
BBLZ-030D-2TC14E2	300 kcmil	1/4"	.75	1.19	1.36	.16	2.00	3.95					
BBLZ-030D-2TC38		3/8"	1.00	1.19	1.83	.16	2.00	4.42					
BBLZ-030D		1/2"	1.75	1.19	3.00	.16	2.00	5.59					
BBLZ-035D-2TC14E2	350 kcmil	1/4"	.75	1.28	1.36	.17	2.00	4.02					
BBLZ-035D-2TC38		3/8"	1.00	1.28	1.83	.17	2.00	4.49					
BBLZ-035D		1/2"	1.75	1.28	3.00	.17	2.00	5.66					
BBLZ-040D-2TC14E2	400 kcmil	1/4"	.75	1.39	1.36	.19	2.13	4.15					
BBLZ-040D-2TC38		3/8"	1.00	1.39	1.83	.19	2.13	4.62					
BBLZ-040D		1/2"	1.75	1.39	3.00	.19	2.13	5.79					
BBLZ-050D-2TC14E2	500 kcmil	1/4"	.75	1.53	1.36	.21	2.25	4.39					
BBLZ-050D-2TC38		3/8"	1.00	1.53	1.83	.21	2.25	4.86					
BBLZ-050D		1/2"	1.75	1.53	3.00	.21	2.25	6.03					
BBLZ-060D-2TC38	600 kcmil	3/8"	1.00	1.72	1.83	.27	2.69	5.39					
BBLZ-060D		1/2"	1.75	1.72	3.00	.27	2.69	6.56					
BBLZ-065D-2TC38		3/8"	1.00	1.78	1.83	.27	2.81	5.51					
BBLZ-065D	650 kcmil	1/2"	1.75	1.78	3.00	.27	2.81	6.68					
BBLZ-075D-2TC38		3/8"	1.00	1.91	1.83	.27	2.88	5.65					
BBLZ-075D		1/2"	1.75	1.91	3.00	.27	2.88	6.85					
BBLZ-080D	800 kcmil	1/2"	1.75	1.97	3.00	.25	2.94	7.00	Orange		25	T-25P	3-1/16"
BBLZ-100D-2TC38	1000 kcmil	3/8"	1.00	2.17	1.83	.33	3.00	5.96	White		27	T-27P	3-1/8"
BBLZ-100D1		1/2"	1.75	2.17	3.00	.33	3.00	7.16					
BBLZ-150D1	1500 kcmil	1/2"	1.75	2.69	3.00	.39	3.19	7.44	Green		31	T-31P	3-5/16"
BBLZ-200D1	2000 kcmil	1/2"	1.75	3.08	3.00	.47	3.44	7.78	Brown		34	-	3-9/16"

• For 45° or 90° BENT TONGUES add suffix "-45" for 45 deg. or "-90" for 90 deg. to the catalog number

- Connectors from 8 AWG - 2000 kcmil are UL listed per UL486A-B and CSA certified per C22.2 No.65 for POWER applications
- Connectors from 8 AWG - 500 kcmil are UL listed for grounding, bonding and direct burial applications per UL467
- Connectors from 8 AWG - 250 kcmil are CSA certified for grounding, bonding and direct burial applications per C22.2 No.41

COMPRESSION CONNECTORS